



## Our Generations State of Oklahoma Retiree Medicare Advantage plan *premium is decreasing for 2017!*

Choose your  
**Generations  
Retiree  
Medicare  
Advantage plan.**

- ✓ Generations State of Oklahoma Retiree plan has the lowest premium of all plans for State of Oklahoma retirees for 2017.
- ✓ Unlimited \$0 Primary Care Physician visits
- ✓ Your monthly premium could be even less when you use your contribution amount from your retirement system.\*
- ✓ Safety net with maximum out of pocket - \$6,700.00

**Our Generations Retiree Medicare Advantage Plan is decreasing its monthly premium for 2017.**

Monthly Premium for Medicare Eligible Retirees  
Plan Year Jan. 1 through Dec. 31, 2017

**Lowest premium of all plans for  
State of Oklahoma Retirees**

Generations by GlobalHealth  
**\$189 per covered person.**

**Annual Enrollment Period:**  
October 15 - December 7

### **SAVE MORE!**

If you are receiving a contribution amount from your retirement system, you may save approximately \$105\*, which means your Generations Retiree plan's monthly premium could be

**only \$84\*!**

*\*Actual savings may vary based on your contribution amount from your retirement system.*

Call today! **855-620-5388 (TTY: 711)**

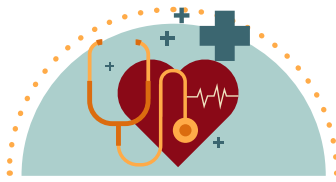
8am - 8pm, seven days a week | [www.GlobalHealth.com/osr](http://www.GlobalHealth.com/osr)



# Membership has its *Perks*



**UNLIMITED \$0  
PRIMARY CARE  
PHYSICIAN  
VISITS**



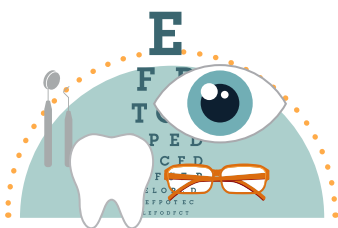
**NO MEDICAL  
OR DRUG  
DEDUCTIBLES**



**\$0 COPAY FOR  
PREFERRED MAIL  
ORDER 90-DAY  
SUPPLY FOR TIER  
1 PRESCRIPTION  
DRUGS**



**PREVENTIVE  
SERVICES  
INCLUDED IN  
EVERY PLAN**



**VISION &  
PREVENTIVE  
DENTAL BENEFITS**



**BASED RIGHT  
HERE IN  
OKLAHOMA**



**AVAILABLE IN  
44 COUNTIES**



**ZERO HASSLE  
ENROLLMENT**

 *Plus,* so much more!

GlobalHealth is an HMO plan with a Medicare contract. Enrollment in GlobalHealth depends on contract renewal. This information is not a complete description of benefits. Contact the plan for more information. Limitations, copayments, and restrictions may apply. Benefits, premiums and/or co-payments/co-insurance may change on January 1 of each year. You must continue to pay your Medicare Part B premium. By calling the listed number you may be speaking with a licensed sales representative. GlobalHealth complies with applicable Federal civil rights laws and does not discriminate on the basis of race, color, national origin, age, disability, or sex. ATENCIÓN: si habla español, tiene a su disposición servicios gratuitos de asistencia lingüística. Llame al 1-844-280-5555 (TTY: 711). CHÚ Ý: Nếu bạn nói Tiếng Việt, có các dịch vụ hỗ trợ ngôn ngữ miễn phí dành cho bạn. Gọi số 1-844-280-5555 (TTY: 711).